

# SPECIFICATION

## SLEEVE WITH INNER FLAPS FOR 2 SWITCH BOXES 105 X 170 MM



Please consider the general printing specifications and the general product information.



### Formats

Exclusively PDF, JPG, TIFF-Files



### File-format/Bleed

Important information such as images and texts which are not intended to be cut off need to be placed 3-4 mm away from the border of the page.

**3 mm bleed**

Crop marks are not necessary!



### Resolution

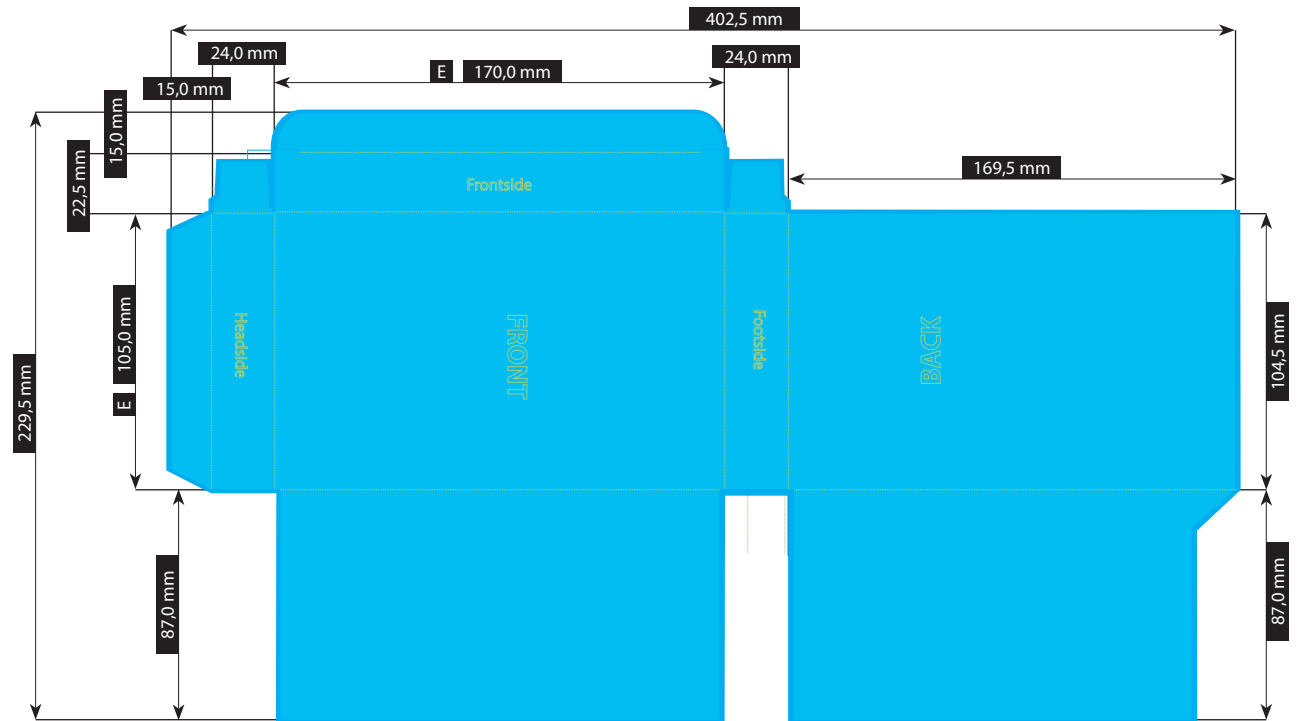
Images should at least have a resolution of 300 dpi.

### Color/Color spectrum

Exclusively CMYK or grayscales

### Fonts

Avoid the usage of fonts under 5 pt.  
All fonts must be embedded or converted into outlines.



Illustrations are scaled to 35%.



FILE-FORMAT  
WITH BLEED  
408,5 x 235,5 mm

ENDFORMAT (E)  
105,0 x 170,0 mm

VER255

Stand: 06/2026 · SCHUBER #255