

# SPEZIFICATION

## CD-PAC · 6 PAGES

2 TRAYS IN THE MIDDLE AND ON THE RIGHT · SLEEVE ON THE LEFT  
OPEN ON BOTH SIDES FOR 3 MM BOOKLET



Please consider the general printing specifications and the general product information.



### Formats

Exclusively PDF, JPG, TIFF-Files



### File-format/Bleed

Important information such as images and texts which are not intended to be cut off need to be placed 3-4 mm away from the border of the page.  
**3 mm bleed**

Crop marks are not necessary!



### Resolution

Images should at least have a resolution of 300 dpi.



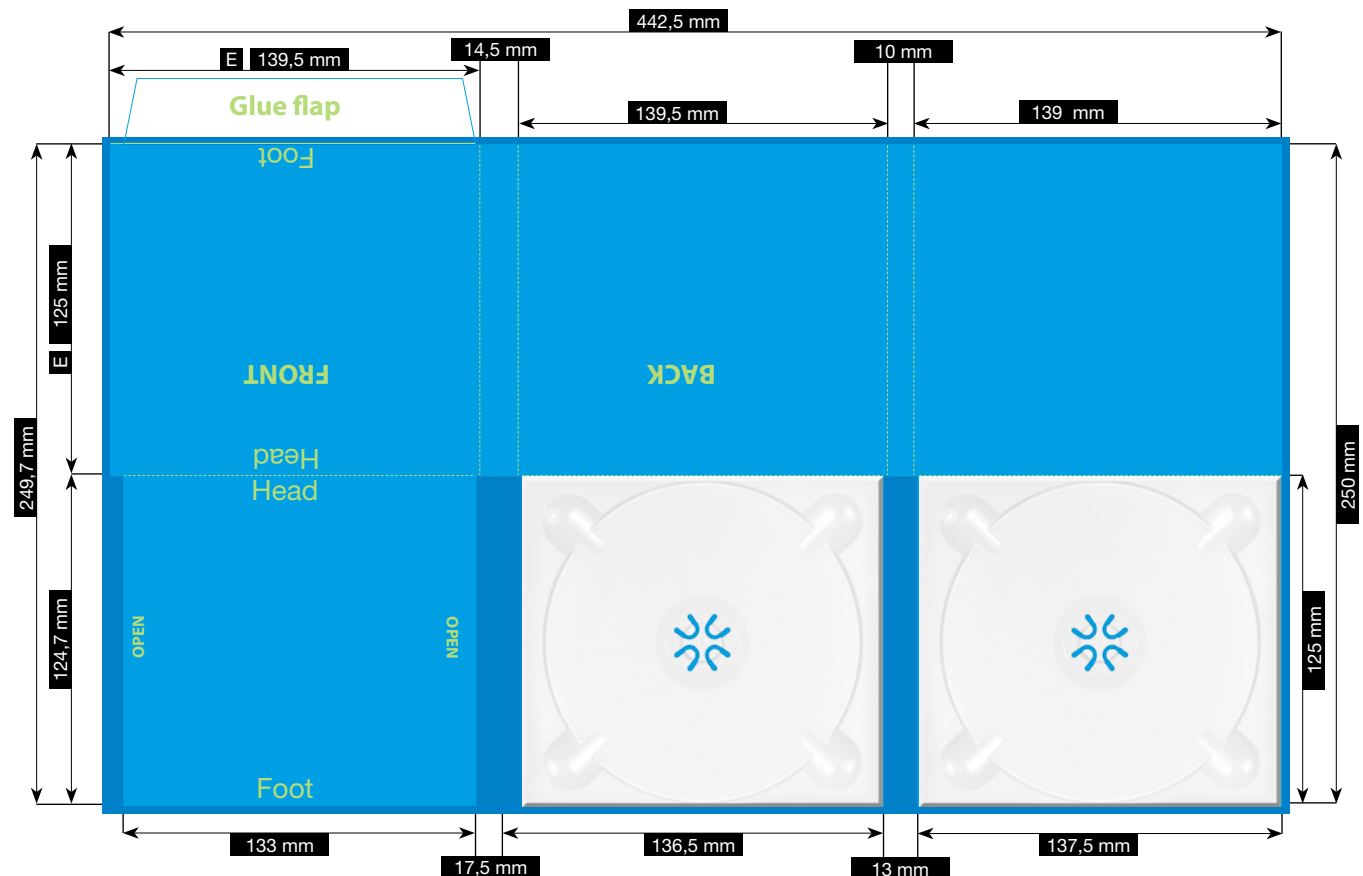
### Color/Color spectrum

Exclusively CMYK or grayscales



### Fonts

Avoid the usage of fonts under 5 pt.  
All fonts must be embedded or converted into outlines.



Illustrations are scaled to 35%.



FILE-FORMAT  
WITH BLEED  
448,5 x 256 mm

ENDFORMAT (E)  
139,5 x 125 mm